

A Northstar BASIC Cross-Reference Tool

BY TITUS PURDIN
5901 JFK # 101
N. Little Rock, Arkansas 72116

In the course of two years of micro computing, I cannot count the number of times friends and acquaintances have offered me copies of programs they have written, only to be disappointed because their BASIC and my BASIC were so vastly different. In many cases, when the offered programs were just too good to pass up, I have locked myself in the study for an evening and made the necessary conversions. It isn't a job that I relish. And while I haven't found an easy way to accomplish it, I have developed, over time, some tools to ease the burden.

This particular program accepts programs in BASIC on Northstar disks and compiles cross-reference lists for all variables, string variables, array variables, and line numbers. I have found this to be a valuable assist when converting programs from one BASIC to another and when compacting a program by placing multiple statements on a single line. Additionally, I have discovered that such lists, annotated with the purpose of each variable, are excellent pieces of documentation.

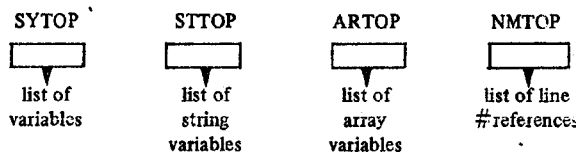
This program is written in 8080 assembly language and requires 13.4K of RAM to accommodate the program and the table space. The program itself requires 1.64K, and 12K is allocated for space in which to build the cross-reference tables. This latter space is more than sufficient for the largest programs I have. It could be reduced if necessary to save space by changing the allocation in line 5090 and changing the byte against which the high order byte of the address is compared at line 0945 to agree with the space allocated.

The program is designed to run at 2A00H and use the I/O and disk drivers currently in your Northstar DOS. References to these drivers are contained in the EQU vectors at the opening of the assembly language listing for ease in changing them if your drivers or your COS are not standard.

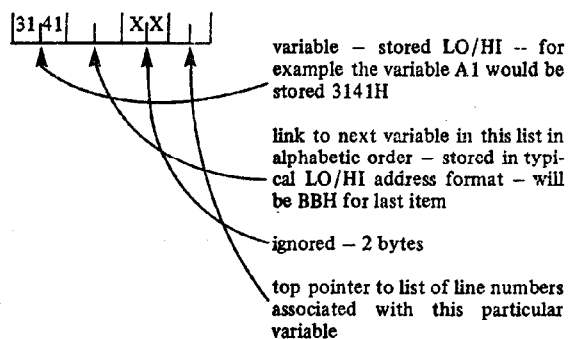
The program creates four separate lists:

1. Variables
2. String variables
3. Array variables
4. Line # references

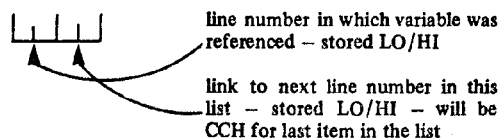
Each of these are supported as linear linked lists in alphabetic soft order. The storage areas SYTOP, STTOP, ARTOP, and NMTOP are the top pointers for these four lists, and the marker BBH is used to mark the end of each of these lists.



Each entry in each of the four lists has an accompanying top pointer for its associated list of line numbers. The mark CCH is used to mark the end of each line number list. A typical variable item looks like this:

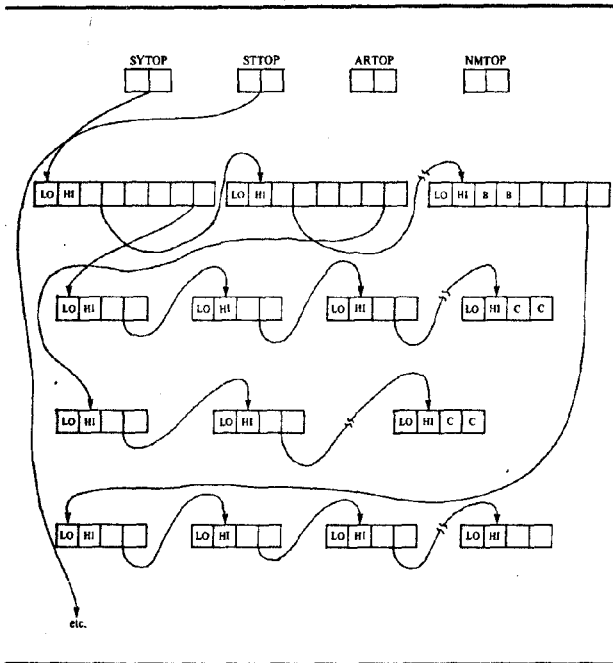


The list of line numbers associated with each variable in each list is constructed in a similar, but simpler, fashion:



The entire program is read from the disk, one 256 byte block at a time, and scanned for the purpose of constructing these lists. When this is completed, the lists are followed in order from beginning to end and the stored variables and line numbers are formatted and printed to produce the cross-reference lists. Each list is printed with its own header, i.e. STRING VARIABLES. And the entry NULL LIST is printed for any list that is empty.

The diagram below represents the multi-list structure in somewhat stylized fashion:



The variables which were found in the program are stored in ASCII in the appropriate list so their conversion for printing is straightforward. The line numbers that are placed in the lists, however, are stored as two byte LO/HI binary values. The algorithm used to convert these to ASCII for printing is fairly simple, if somewhat bulky. Taking the binary value as an ordered 16 bit field, the program uses a 5 byte work area to construct the resulting decimal number. A table is provided (BASE:) which represents, as 5 single digits, the decimal number associated with each bit position of the 16 bit binary value. If a bit in the binary value is "on," then the five digits associated with that bit position are added to the five byte work area along with any necessary "carry's" from byte to byte. If, on the other hand, a bit in the binary value is "off," then the pointer into the table (BASE:) is bumped down 5 to point to the next series of 5 values. When this process is complete, 30H is added to each byte of the 5 byte work area to yield the desired ASCII value.

This program has proven useful in its own right. But it is worth mentioning that a modification of this same idea, directed solely at line number references, would be the basis for a program which would "compact" BASIC programs by removing unnecessary line numbers. Similarly, this sort of cross-reference compilation would form the basis of "pass one" of more sophisticated software such as a compiler. A compiler! Now there's an idea.

Listing

```

0005 ; THIS PROGRAM PROVIDES SOFTWARE SUPPORT FOR
0010 ; PROGRAMS WRITTEN IN NORTHSTAR BASIC. IT COMPILES
0015 ; AND PRINTS FOUR LISTS: 1)A LIST OF VARIABLE NAMES
0020 ; USED AND LINES IN WHICH EACH OF THEM OCCURS, 2)A
0025 ; LIST OF STRING VARIABLE NAMES USED AND LINES IN
0030 ; WHICH EACH OCCURS, 3)A LIST OF ARRAY VARIABLE
0035 ; NAMES AND LINES IN WHICH EACH OCCURS, AND 4)A
0040 ; LIST OF LINE NUMBERS REFERENCED IN GOTO AND GOSUB
0045 ; STATEMENTS AND LINE NUMBERS IN WHICH THEY ARE
0050 ; REFERENCED.
0055 ;
2A00 0060      ORG      2A00H
2A00 214233    0065      LXI      H,STACK+49
2A03 F9       0070      SPHL
2010 =        0075      CIN:    EQU      2010H
200D =        0080      COUT:   EQU      200DH
201C =        0085      DIRCK:  EQU      201CH
2022 =        0090      RDDSH:  EQU      2022H
2028 =        0095      EXIT:   EQU      2020H
0100 ;
0105 ; PRINT HEADER
0110 ;
0115 START:   MVI      C,31
0120          LXI      H,HDR1
0125          CALL    PRINT
0130          CALL    CRLF
0135 ;
0140 ; PRINT FILE NAME PROMPT
0045 ;
2A0F 0E11     0150      ASKFL:  MVI      C,17
2A11 21A630   0155      LXI      H,HDR2
2A14 C5E330   0160      CALL    PRINT
2A17 0E0A     0165      MVI      C,10
2A19 218731   0170      LXI      H,PNAME
0175 ;
0180 ; BLANK PROGRAM NAME AREA
0185 ;
2A1C 3620     0190      ELNAM:  MVI      M,20H
2A1E 23       0195      INX      H
2A1F 0D       0200      DCR      C
2A20 C21C2A   0205      JNZ      BLNAM
2A23 0E09     0210      MVI      C,9
2A25 218731   0215      LXI      H,PNAME
0220 ;
0225 ; ACCEPTS FILE NAME. USES REG C AS COUNTER AND
0230 ; ACCEPTS UP TO 8 CHARACTERS. TAKES CARE OF
0235 ; BLANKING CHAR IN RESPONSE TO BACKSPACE (5FH).
0240 ; ROUTINE TERMINATES WHEN CR (0DH) IS ENCOUNTERED.
0245 ;
2A28 CD1020   0250      INFIL:  CALL    CIN
2A2B 32B232   0255      STA      HOLDT
2A2E FE0D     0260      CPI      0DH
2A30 CA6F2A   0265      JZ       INUNT
2A33 FEF7     0270      CPI      5FH
2A35 C2542A   0275      JNZ      STORE
2A38 3E89     0280      MVI      A,9
2A3A B9       0285      CMP      C
2A3B CA282A   0290      JZ       INFIL
2A3E 3AB232   0295      LDA      HOLDT
2A41 2B       0300      DCX      H
2A42 0C       0305      INR      C
2A43 47       0310      MOV      B,A
2A44 CD0D20   0315      CALL    COUT
2A47 0620     0320      MVI      B,20H
2A49 CD0D20   0325      CALL    COUT
2A4C 065F     0330      MVI      B,5FH
2A4E CD0D20   0335      CALL    COUT
2A51 C3202A   0340      JMP      INFIL
0345 ;
0350 ; PLACES CHARACTERS FROM INFIL: SEQUENTIALLY
0355 ; INTO AREA CALLED 'PNAME' TO BUILD INPUT
0360 ; FILE NAME. PRINTS 'NAME TOO LONG' ERROR
0365 ; IF 8 CHARACTERS ARE EXCEEDED.
0370 ;
2A54 77       0375      STORE:  MOV      M,A
2A55 47       0380      MOV      B,A
2A56 CD0D20   0385      CALL    COUT
2A59 23       0390      INX      H
2A5A 0D       0395      DCR      C
2A5B C2282A   0400      JNZ      INFIL
2A5E CD6830   0405      CALL    CRLF
2A61 0E10     0410      MVI      C,16
2A63 211831   0415      LXI      H,HDR7
2A66 CD5E30   0420      CALL    PRINT
2A69 CD6830   0425      CALL    CRLF
2A6C C30F2A   0430      JMP      ASKFL
0435 ;
0440 ; ACCEPTS DISK UNIT NUMBER. CHECKS TO MAKE
0445 ; SURE INPUT IS ASCII 1, 2, OR 3.
0450 ;
2A6F 0E0C     0455      INUNT:  MVI      C,12
2A71 218730   0460      LXI      H,HDR3
2A74 CD6830   0465      CALL    CRLF
2A77 CD5E30   0470      CALL    PRINT
2A7A 219131   0475      LXI      H,DRIVE
2A7D CD1020   0480      CALL    CIN
2A80 47       0485      MOV      B,A
2A81 CD0D20   0490      CALL    COUT
2A84 FE31     0495      CPI      31H
2A86 CAA42A   0500      JZ       GETCR
2A89 FE32     0505      CPI      32H
2A8B CAA42A   0510      JZ       GETCR
2A8E FE33     0515      CPI      33H
2A90 CAA42A   0520      JZ       GETCR
0525 ;

```

```

0530 J PRINTS 'INVALID UNIT' ERROR IF INPUT
0535 J IS NOT EQUAL TO ASCII 1, 2, OR 3.
0540 J
2A93 CD6830 0545 ERUNT: CALL CRLF
2A96 0E8C 0550 MVI C,12
2A98 212031 0555 LXI H,HDREB
2A9B CD5E30 0560 CALL PRINT
2A9E CD6830 0565 CALL CRLF
2AA1 C36F2A 0570 JMP INUNT
0575 J
0580 J TRIMS ASCII INPUT UNIT # TO BINARY VALUE
0585 J AND STORES IT IN AREA CALLED 'DRIVE'. ACCEPTS
0590 J CR TO CONTINUE. ANY OTHER INPUT CAUSES
0595 J 'INVALID UNIT' ERROR. PUTS ADDRESS OF PROGRAM
0600 J NAME IN REG H7L AND VALUE OF DRIVE # IN REG
0605 J A. CALLS DOS DIRECTORY LOOKUP ROUTINE.
0610 J AT 281CH. IF CARRY BIT IS SET ON RETURN
0615 J 'NO PROGRAM' ERROR IS PRINTED.
0620 J
2AA4 E60F 0625 GETCR: ANI 0FH
2AA6 77 0630 MOV M,A
2AA7 CD1020 0635 CALL CIN
2AAA 47 0640 MOV B,A
2AAB CD0D20 0645 CALL COUT
2AAE FE0C 0650 CPI 0DH
2AB0 C2932A 0655 JNZ ERUNT
2AB3 260A 0660 MVI B,0AH
2AB5 CD0D20 0665 CALL COUT
2AB8 3A9131 0670 LDA DRIVE
2ABB 218731 0675 LXI H,PNAME
2ABE 37 0680 STC
2ADF 3F 0685 CMC
2AC0 CD1C20 0690 CALL DIRCK
2AC3 D2D42A 0695 JNC CKTYP
2AC6 0E19 0700 MVI C,25
2AC8 21C330 0705 LXI H,HDRE4
2ACB CD5E30 0710 CALL PRINT
2ACE CD6830 0715 CALL CRLF
2AD1 C36F2A 0720 JMP ASKFL
0725 J
0730 J CHECKS FILE TYPE TO INSURE IT IS TYPE 2.
0735 J
2AD4 0600 0740 CKTYP: MVI B,0
2AD6 0E04 0745 MVI C,4
2AD8 09 0750 DAD B
2AD9 3E02 0755 MVI A,2
2ADB BE 0760 CMP M
2ADC CAED2A 0765 JZ STADD
2ADF 0E12 0770 MVI C,18
2AE1 21DC30 0775 LXI H,HDRE5
2AEA CD5E30 0780 CALL PRINT
2AE7 CD6830 0785 CALL CRLF
2AEA C36F2A 0790 JMP ASKFL
0795 J
0800 J STORES DATA FROM DISK DIRECTORY FOR THE FILE
0805 J IN AREA CALLED 'DIR'.
0810 J
2AE8 2B 0815 STADD: DCX H
2AEE 2B 0820 DCX H
2AEF 2B 0825 DCX H
2AF0 2B 0830 DCX H
2AF1 0E08 0835 MVI C,8
2AF3 110933 0840 LXI D,DIR
2AF6 7E 0845 STADI: MOV A,M
2AF7 12 0850 STAX D
2AF8 23 0855 INX H
2AF9 13 0860 INX D
2AFA 0D 0865 DCR C
2AFB C2F62A 0870 JNZ STADI
0875 J
0880 J SETS LINKS IN AREA CALLED 'TABLE'. INITIALIZES
0885 J THE TOP POINTERS FOR THE FOUR LISTS 'SYTOP',
0890 J 'STOPT', 'ARTOP', AND 'NMTOP'. INITIALIZES THE
0895 J AVAILABILITY POINTER 'AVAIL'.
0900 J
2AFE 2600 0905 MVI H,0
2B00 2E00 0910 MVI L,0
2B02 22A333 0915 SHLD ADDR
2B05 0600 0920 MVI B,0
2B07 0E04 0925 MVI C,4
2B09 118F33 0930 LXI D,TABLE+2
2B0C 2A4333 0935 SLINK: LHLD ADDR
2B0F 23 0940 INX H
2B10 3E0C 0945 MVI A,0CH
2B12 BC 0950 CMP H
2B13 CA232B 0955 JZ STOPS
2B16 22A333 0960 SHLD ADDR
2B19 62 0965 MOV H,D
2B1A 68 0970 MOV L,E
2B1B 09 0975 DAD B
2B1C EB 0980 XCHG
2B1D 73 0985 MOV M,E
2B1E 23 0990 INX H
2B1F 72 0995 MOV M,D
2B20 C30C2B 1000 JMP SLINK
2B23 3EFF 1005 STOPS: MVI A,0FFH
2B25 23 1010 INX H
2B26 77 1015 MOV M,A
2B27 26BB 1020 MVI H,0BBH
2B29 2EBB 1025 MVI L,0BBH
2B2B 22A632 1030 SHLD SYTOP
2B2E 22A832 1035 SHLD STTOP
2B31 22AA32 1040 SHLD ARTOP
2B34 22AC32 1045 SHLD NMTOP
2B37 218733 1050 LXI H,TABLE+2
2B3A 22AE32 1055 SHLD AVAIL
2B3D CD2F30 1060 CALL RBLK
1065 J
1070 J BEGINS PROCESSING FOR A LINE OF BASIC CODE.
1075 J STORES LINE NUMBER AND LINE LENGTH.
1080 J

```

```

2B40 AF 1085 NEWLN: XRA A
2B41 329732 1090 STA MARK
2B44 3C 1095 INR A
2B45 EB 1100 XCHG
2B46 BE 1105 CMP M
2B47 CAB2D 1110 JZ FRTRN
2B4A EB 1115 XCHG
2B4B CD7330 1120 CALL NXTCR
2B4E 1A 1125 LDAX D
2B4F 32A232 1130 STA LOLIN
2B52 CD7330 1135 CALL NXTCR
2B55 1A 1140 LDAX D
2B56 32A332 1145 STA HILIN
2B59 AF 1150 XRA A
2B5A 32A132 1155 STA LNTAB
2B5D CD7330 1160 CALL NXTCR
2B60 62 1165 NEWL1: MOV H,D
2B61 6B 1170 MOV L,E
2B62 3E20 1175 MVI A,20H
2B64 BE 1180 CMP M
2B65 CAB62B 1185 JZ NEWL6
2B68 3E8F 1190 MVI A,8FH
2B6A BE 1195 CMP M
2B6B C2732B 1200 JNZ NEWL2
2B6E 3E01 1205 MVI A,1
2B70 329732 1210 STA MARK
2B73 3E22 1215 NEWL2: MVI A,22H
2B75 BE 1220 CMP M
2B76 CD902B 1225 XCHG
2B79 3A9732 1230 JNZ NEWL4
2B7C FE02 1235 CPI 02H
2B7E C2882B 1240 JNZ NEWL3
2B81 AF 1245 XRA A
2B82 329732 1250 STA MARK
2B85 C3B62B 1255 JMP NEWL6
2B88 3E02 1260 NEWL3: MVI A,2
2B8A 329732 1265 STA MARK
2B8D C3B62B 1270 JMP NEWL6
2B90 3A9732 1275 NEWL4: LDA MARK
2B93 FE00 1280 CPI 0H
2B95 C2E62B 1285 JNZ NEWL6
2B98 3E9A 1290 MVI A,9AH
2B9A BE 1295 CMP M
2B9B C2A42B 1300 JNZ NEWL5
2B9E CDC82B 1305 CALL STNUM
2BA1 C3B62B 1310 JMP NEWL6
2BA4 3E40 1315 NEWL5: MVI A,40H
2BA6 BE 1320 CMP M
2BA7 D2B62B 1325 JNC NEWL6
2BAA 3E5A 1330 MVI A,5AH
2BAC BE 1335 CMP M
2BAD DAB62B 1340 JC NEWL6
2BB0 CDEA2B 1345 CALL GETSY
2BB3 C3B92B 1350 JMP NEWL7
2BB6 CD7330 1355 NEWL6: CALL NXTCR
2BB9 3E0D 1360 NEWL7: MVI A,0DH
2BBB 21A132 1365 LXI H,LNTAB-
2BBE BE 1370 CMP M
2BBF C2602B 1375 JNZ NEWL1
2BC2 CD7330 1380 CALL NXTCR
2BC5 C3A02B 1385 JMP NEWLN
1390 J
1395 J EXTRACTS A LINE NUMBER REFERENCE
1400 J AND PLACES IT IN 'VALHI' AND 'VALLO'
1405 J THEN CALLS THE SEARCH AND INSERT
1410 J NODE ROUTINES
1415 J
2BC8 CD7330 1420 STNUM: CALL NXTCR
2BCB 1A 1425 LDAX D
2BCC 32A532 1430 STA VALLO
2BCF CD7330 1435 CALL NXTCR
2BD2 1A 1440 LDAX D
2BD3 32A432 1445 STA VALHI
2BD6 AF 1450 XRA A
2BD7 32A132 1455 STA LNTAB
2BDA 2AAC32 1460 LHLD NMTOP
2BDD 22B032 1465 SHLD TOP
2BE0 CD7A2C 1470 CALL SEFCH
2BE3 2AB032 1475 LHLD TOP
2BE4 22AC32 1480 SHLD NMTOP
2BE9 C9 1485 RET
1490 J
1495 J EXTRACT A SYMBOL AND DETERMINE WHICH
1500 J LIST IT BELONGS IN. CALLS THE
1505 J SEARCH AND INSERT NODE ROUTINES.
1510 J
2BEA 3E20 1515 GETSY: MVI A,20H
2BEC 32A532 1520 STA VALLO
2BEF 32A432 1525 STA VALHI
2BF2 1A 1530 LDAX D
2BF3 32A432 1535 STA VALHI
2BF6 CD7330 1540 CALL NXTCR
2BF9 3E2D 1545 MVI A,0DH
2BFB 21A132 1550 LXI H,LNTAB
2BFE BE 1555 CMP M
2BFF C2082C 1560 JNZ GETS1
2C02 C04A2C 1565 CALL STRSY
2C05 C3492C 1570 JMP GETS5
2C08 62 1575 GETS1: MOV H,D
2C09 6B 1580 MOV L,E
2C0A 3E2F 1585 MVI A,2FH
2C0C BE 1590 CMP M
2C0D D22C2C 1595 JNC GETS2
2C10 3E39 1600 MVI A,39H
2C12 BE 1605 CMP M
2C13 DA2C2C 1610 JC GETS2
2C16 1A 1615 LDAX D
2C17 32A532 1620 STA VALLO
2C1A CD7330 1625 CALL NXTCR
2C1D 3E0D 1630 MVI A,0DH
2C1F 21A132 1635 LXI H,LNTAB
2C22 BE 1640 CMP M
2C23 C2C2C 1645 JNZ GETS2

```

```

2C26 CD4A2C 1650 CALL STRSY
2C29 C3492C 1655 JMP GETS5
2C2C 62 1660 GETS2: MOV H,D
2C2D 6E 1665 MOV L,E
2C2E 3E24 1670 MVI A,24H
2C30 BE 1675 CMP M
2C31 C2A2C 1680 JNZ GETS3
2C34 CD5A2C 1685 CALL STRST
2C37 C3492C 1690 JMP GETS5
2C3A 3EE0 1695 GETS3: MVI A,0E2H
2C3C BE 1700 CMP M
2C3D C2462C 1705 JNZ GETS4
2C40 CD6A2C 1710 CALL STRAR
2C43 C3492C 1715 JMP GETS5
2C46 CD4A2C 1720 GETS4: CALL STRSY
2C49 C9 1725 GETS5: RET
1730 ;
1735 ; SETS SYMBOL LIST TOP POINTER AND CALLS
1740 ; SEARCH AND INSERT NODE ROUTINES.
1745 ;
2C4A 2AA632 1750 STRSY: LHLD SYTOP
2C4D 22B032 1755 SHLD TOP
2C50 CD7A2C 1760 CALL SERCH
2C53 2AB032 1765 LHLD TOP
2C56 22A632 1770 SHLD SYTOP
2C59 C9 1775 RET
1780 ;
1785 ; SETS TOP POINTER TO STRING LIST TOP AND
1790 ; CALLS SEARCH AND INSERT NODE ROUTINES.
1795 ;
2C5A 2AA632 1800 STRST: LHLD STTOP
2C5D 22B032 1805 SHLD TOP
2C60 CD7A2C 1810 CALL SERCH
2C63 2AB032 1815 LHLD TOP
2C66 22A632 1820 SHLD STTOP
2C69 C9 1825 RET
1830 ;
1835 ; SETS TOP POINTER TO ARRAY LIST TOP AND
1840 ; CALLS SEARCH AND INSERT NODE ROUTINES.
1845 ;
2C6A 2AAA32 1850 STRAR: LHLD ARTOP
2C6D 22B032 1855 SHLD TOP
2C70 CD7A2C 1860 CALL SERCH
2C73 2AB032 1865 LHLD TOP
2C76 22AA32 1870 SHLD ARTOP
2C79 C9 1875 RET
1880 ;
1885 ; SEARCH AND STORE ROUTINE
1890 ;
2C7A 229C32 1895 SERCH: SHLD NEXT
2C7D EB 1900 XCHG
2C7E 229E32 1905 SHLD POINT
2C81 3EBB 1910 MVI A,0BBH
2C83 329032 1915 STA LAST
2C86 329032 1920 STA LAST+1
2C89 2AAE32 1925 LHLD AVAIL
2C8C 229A32 1930 SHLD PRSNT
2C8F 2B 1935 DCX H
2C90 3AA432 1940 LDA VALHI
2C93 77 1945 MOV M,A
2C94 2B 1950 DCX H
2C95 3AA532 1955 LDA VALLO
2C98 77 1960 MOV M,A
2C99 23 1965 INX H
2C9A 23 1970 INX H
2C9B 3EBB 1975 MVI A,0BBH
2C9D 77 1980 MOV M,A
2C9E 23 1985 INX H
2C9F 77 1990 MOV M,A
2CA0 23 1995 INX H
2CA1 23 2000 INX H
2CA2 23 2005 INX H
2CA3 7E 2010 MOV A,M
2CA4 32AE32 2015 STA AVAIL
2CA7 3ECC 2020 MVI A,0CCH
2CA9 77 2025 MOV M,A
2CAA 23 2030 INX H
2CAB 7E 2035 MOV A,M
2CAC 32AF32 2040 STA AVAIL+1
2CAF 3ECC 2045 MVI A,0CCH
2CB1 77 2050 MOV M,A
2CB2 2A9C32 2055 LHLD NEXT
2CB5 3EBB 2060 MVI A,0BBH
2CB7 BC 2065 CMP H
2CB8 C2C92C 2070 JNZ SERC2
2CB9 BD 2075 JNZ SERC2
2CBC C2C92C 2080 JNZ SERC2
2CBF 2A9A32 2085 SERC1: LHLD PRSNT
2CC2 22B032 2090 SHLD TOP
2CC5 CD752D 2095 CALL LNNUM
2CC8 C9 2100 RET
2CC9 2B 2105 SERC2: DCX H
2CCA 56 2110 MOV D,M
2CCB 3AA432 2115 LDA VALHI
2CCE BA 2120 CMP D
2CCF CA322D 2125 JZ DEQUA
2CD2 D2FB2C 2130 JNC DLESA
2135 ;
2140 ; SETS THE LINKS IN THE APPROPRIATE LIST
2145 ; TO REFLECT THE PROPER SEQUENCE FOR THE
2150 ; CURRENT ITEM.
2155 ;
2CD5 2A9A32 2160 DGRT1: LHLD PRSNT
2CD8 3A9C32 2165 LDA NEXT
2CDB 77 2170 MOV M,A
2CDC 23 2175 INX H
2CDD 3A9D32 2180 LDA NEXT+1
2CE0 77 2185 MOV M,A
2CE1 2A9B32 2190 LHLD LAST
2CEA 3EBB 2195 MVI A,0BBH
2CL6 BC 2200 CMP H
2CE7 C2EE2C 2205 JNZ DGRT1
2CLA BD 2210 CMP L

```

```

2CEB CBF2C 2215 JZ SERC1
2CEE 3A9A32 2220 DGRT1: LDA PRSNT
2CF1 77 2225 MOV M,A
2CF2 23 2230 INX H
2CF3 3A9B32 2235 LDA PRSNT+1
2CF6 77 2240 MOV M,A
2CF7 CD752D 2245 CALL LNNUM
2CFA C9 2250 RET
2255 ;
2260 ; CONTINUES TO SEARCH THE APPROPRIATE
2265 ; LIST FOR THE PROPER PLACE IN WHICH
2270 ; TO INSERT THE CURRENT ITEM.
2275 ;
2CFB 3EBB 2280 DLESA: MVI A,0BBH
2CFD 2A9C32 2285 LHLD NEXT
2D00 BC 2290 CMP H
2D01 C2182D 2295 JNZ DLES2
2D04 BD 2300 CMP L
2D05 C2182D 2305 JNZ DLES2
2D08 2A9B32 2310 DLES1: LHLD LAST
2D0B 3A9A32 2315 LDA PRSNT
2D0E 77 2320 MOV M,A
2D0F 23 2325 INX H
2D10 3A9B32 2330 LDA PRSNT+1
2D13 77 2335 MOV M,A
2D14 CD752D 2340 CALL LNNUM
2D17 C9 2345 RET
2D18 2A9C32 2350 DLES2: LHLD NEXT
2D1B 229832 2355 SHLD LAST
2D1E 5E 2360 MOV E,M
2D1F 23 2365 INX H
2D20 56 2370 MOV D,M
2D21 EB 2375 XCHG
2D22 229C32 2380 SHLD NEXT
2D25 3EBB 2385 MVI A,0BBH
2D27 BC 2390 CMP H
2D28 C2C92C 2395 JNZ SERC2
2D2B BD 2400 CMP L
2D2C C2C92C 2405 JNZ SERC2
2D2F C3082D 2410 JMP DLESI
2415 ;
2420 ; CHECKS TO SEE IF THE CURRENT ITEM IS
2425 ; ALREADY IN THE APPROPRIATE LIST.
2430 ;
2D32 2B 2435 DEQUA: DCX H
2D33 56 2440 MOV D,M
2D34 3AA532 2445 LDA VALLO
2D37 EB 2450 CMP H
2D38 CA12D 2455 JZ DEQUI
2D3B D2FB2C 2460 JNC DLESA
2D3E C3D52C 2465 JMP DGRTA
2D41 2AAE32 2470 DEQUI: LHLD AVAIL
2D44 2B 2475 DCX H
2D45 2B 2480 DCX H
2D46 2B 2485 DCX H
2D47 3AAF32 2490 LDA AVAIL+1
2D4A 77 2495 MOV M,A
2D4B 2B 2500 DCX H
2D4C 3AAE32 2505 LDA AVAIL
2D4F 77 2510 MOV M,A
2D50 2B 2515 DCX H
2D51 2B 2520 DCX H
2D52 2B 2525 DCX H
2D53 EB 2530 XCHG
2D54 2AAE32 2535 LHLD AVAIL
2D57 2B 2540 DCX H
2D58 2B 2545 DCX H
2D59 2B 2550 DCX H
2D5A 2B 2555 DCX H
2D5B 22AE32 2560 SHLD AVAIL
2D5E EB 2565 XCHG
2D5F 3AAF32 2570 LDA AVAIL+1
2D62 77 2575 MOV M,A
2D63 2B 2580 DCX H
2D64 3AAE32 2585 LDA AVAIL
2D67 77 2590 MOV M,A
2D68 22AE32 2595 SHLD AVAIL
2D6B 2A9C32 2600 LHLD NEXT
2D6E 229A32 2605 SHLD PRSNT
2D71 CD752D 2610 CALL LNNUM
2D74 C9 2615 RET
2620 ;
2625 ; INSERTS THE LINE NUMBER FOR THE
2630 ; CURRENT ITEM IN THE LINE NUMBER
2635 ; LIST FOR THAT ITEM. THE NEW
2640 ; LINE NUMBER IS ADDED AT THE END
2645 ; OF THE LIST SINCE THEY ARE ENCOUNTERED
2650 ; IN ORDER.
2655 ;
2D75 2A9A32 2660 LNNUM: LHLD PRSNT
2D78 23 2665 INX H
2D79 23 2670 INX H
2D7A 23 2675 INX H
2D7B 23 2680 INX H
2D7C 3ECC 2685 LNNUM: MVI A,0CCH
2D7E BE 2690 CMP H
2D7F C2B52D 2695 JNZ LNNUM3
2D82 23 2700 INX H
2D83 BE 2705 CMP H
2D84 C2B42D 2710 JNZ LNNUM2
2D87 2B 2715 DCX H
2D88 3AAE32 2720 LDA AVAIL
2D8B 77 2725 MOV M,A
2D8C 23 2730 INX H
2D8D 3AAF32 2735 LDA AVAIL+1
2D90 77 2740 MOV M,A
2D91 2AAE32 2745 LHLD AVAIL
2D94 2B 2750 DCX H
2D95 2B 2755 DCX H
2D96 3AA232 2760 LDA LOLIN
2D99 77 2765 MOV M,A
2D9A 23 2770 INX H
2D9B 3AA332 2775 LDA HILIN

```

```

2D9E 77      2188      MOV  M,A
2D9F 23      2185      INX  H
2DA0 7E      2190      MOV  A,M
2DA1 32AE32  2195      STA  AVAIL
2DA4 3ECC    2200      MVI  A,0CCH
2DA6 77      2205      MOV  M,A
2DA7 23      2210      INX  H
2DA8 7E      2215      MOV  A,M
2DA9 32AF32  2220      STA  AVAIL+1
2DAC 3ECC    2225      MVI  A,0CCH
2DAE 77      2230      MOV  M,A
2DAF 2A9E32  2235      LHL  POINT
2DB2 ED      2240      XCHG
2DB3 C9      2245      RET
2DB4 2B      2250      LNNU2: DCX  H
2DB5 5E      2255      LNNU3: MOV  E,M
2DB6 23      2260      INX  H
2DB7 56      2265      MOV  D,M
2DB8 EB      2270      XCHG
2DB9 C37C2D  2275      JMP  LNNU1
2880 J
2885 J PRINTS THE NECESSARY HEADERS AND
2890 J LOADS THE APPROPRIATE LIST TOP POINTERS
2895 J FOR USE BY THE SEARCH AND PRINT ROUTINES.
2900 J
2905 PRTRN: MVI  C,16
2910      LXI  H,HDR11
2915      CALL CRLF
2920      CALL PRINT
2925      CALL CRLF
2930      LHL  SYTOP
2935      SHLD TOP
2940      MVI  A,1
2945      STA  MARK
2950      CALL FNDSY
2955      CALL CRLF
2960      MVI  C,16
2965      LXI  H,HDR12
2970      CALL PRINT
2975      CALL CRLF
2980      LHL  STTOP
2985      SHLD TOP
2990      MVI  A,2
2995      STA  MARK
3000      CALL FNDSY
3005      CALL CRLF
3010      MVI  C,15
3015      LXI  H,HDR13
3020      CALL PRINT
3025      CALL CRLF
3030      LHL  ARTOP
3035      SHLD TOP
3040      MVI  A,3
3045      STA  MARK
3050      CALL FNDSY
3055      CALL CRLF
3060      MVI  C,12
3065      LXI  H,HDR14
3070      CALL PRINT
3075      CALL CRLF
3080      LHL  NHTOP
3085      SHLD TOP
3090      MVI  A,4
3095      STA  MARK
3100      CALL FNDSY
3105      JMP  EXIT
3110 J
3115 J THIS SECTION USES THE CONTENTS OF 'TOP'
3120 J AND FOLLOWS THE LINKS FOR THE APPROPRIATE
3125 J LIST. AT EACH ELEMENT IT LOADS 'HOLDT'
3130 J WITH THE LINE FOR THE LINE NUMBER
3135 J REFERENCES AND FOLLOWS THAT LIST, PRINTING
3140 J THE NUMBERS AS IT GOES.
3145 J
3150 FNDSY: LHL  TOP
3155      MVI  A,0BBH
3160      CMP  H
3165      JNZ  FNDS1
3170      CMP  L
3175      JNZ  FNDS1
3180      MVI  C,9
3185      LXI  H,HDR15
3190      CALL CRLF
3195      CALL PRINT
3200      CALL CRLF
3205      RET
3210 FNDS1: CALL  BLKLN
3215      LHL  TOP
3220      MOV  E,M
3225      INX  H
3230      MOV  D,M
3235      DCX  H
3240      XCHG
3245      SHLD NEXT
3250      LDA  MARK
3255      CPI  4
3260      JNZ  FNDS3
3265      DCX  D
3270      LDAX D
3275      STA  VALHI
3280      DCX  D
3285      LDAX D
3290      STA  VALLO
3295      CALL CONVR
3300      LXI  H,PLINE
3305      XCHG
3310      LXI  H,NUMBR
3315      MVI  C,5
3320 FNDS2: MOV  A,M
3325      STAX D
3330      INX  H
3335      INX  D
3340      DCR  C

```

```

2E7C C2772E  3345      JNZ  FNDS2
2E7F 2AB032  3350      LHL  TOP
2E80 ED      3355      XCHG
2E83 1B      3360      DCX  D
2E84 1B      3365      DCX  D
2E85 CDB2E   3370      CALL LSTNM
2E88 C3C12E  3375      JMP  FNDS7
2E8B 214533  3380 FNDS3: LXI  H,PLINE
2E8E 1B      3385      DCX  D
2E8F 1A      3390      LDAX D
2E90 77      3395      MOV  M,A
2E91 23      3400      INX  H
2E92 1B      3405      DCX  D
2E93 1A      3410      LDAX D
2E94 FE20    3415      CPI  20H
2E96 CA9B2E  3420      JZ   FNDS4
2E99 77      3425      MOV  M,A
2E9A 23      3430      INX  H
2E9B 3A9732  3435 FNDS4: LDA  MARK
2E9E FE02    3440      CPI  2
2EA0 C2AC2E  3445      JNZ  FNDS5
2EA3 3E24    3450      MVI  A,24H
2EA5 77      3455      MOV  M,A
2EA6 CDB2E   3460      CALL LSTNM
2EA9 C3C12E  3465      JMP  FNDS7
2EAC FE03    3470 FNDS5: CPI  3
2EAE C2B2E   3475      JNZ  FNDS6
2EB1 3E28    3480      MVI  A,28H
2EB2 77      3485      MOV  M,A
2EB4 23      3490      INX  H
2EB5 3E29    3495      MVI  A,29H
2EB7 77      3500      MOV  M,A
2EB8 CDB2E   3505      CALL LSTNM
2EBB C3C12E  3510      JMP  FNDS7
2EBE CDB2E   3515 FNDS6: CALL LSTNM
2EC1 2A9C32  3520 FNDS7: LHL  NEXT
2EC4 3EBB    3525      MVI  A,0BBH
2EC6 BC      3530      CMP  H
2EC7 C2CF2E  3535      JNZ  FNDS8
2ECA BD      3540      CMP  L
2ECB C2CF2E  3545      JNZ  FNDS8
2ECF C9      3550      RET
2ECF CD6830  3555 FNDS8: CALL CRLF
2ED2 2A9C32  3560      LHL  NEXT
2ED5 22B232  3565      SHLD TOP
2ED8 C3AB2E  3570      JMP  FNDS1
3575 J
3580 J FOLLOWS EACH LINE NUMBER LIST AND PRINTS
3585 J THE FORMATED NUMBERS.
3590 J
2EDB 13      3595 LSTNM: INX  D
2EDC 13      3600      INX  D
2EDD 13      3605      INX  D
2EDE 13      3610      INX  D
2EDF 13      3615      INX  D
2EE0 13      3620      INX  D
2EE1 13      3625      INX  D
2EE2 13      3630      INX  D
2EE3 13      3635      INX  D
2EE4 13      3640      INX  D
2EE5 AF      3645 LSTN1: XRA  A
2EE6 329432  3650      STA  TAB
2EE9 3E08    3655      MVI  A,8
2EEB 329232  3660      STA  LINCT
2EEE 3E0C    3665      MVI  A,12
2EF0 329332  3670      STA  CHRCT
2EF3 215133  3675      LXI  H,PLINE+12
2EF6 22B232  3680      SHLD HOLDT
2EF9 1B      3690 LSTN2: DCX  D
2EFA 1A      3695      LDAX D
2EFB 32A432  3700      STA  VALHI
2EFE 1B      3705      DCX  D
2EFF 1A      3710      LDAX D
2F00 32A532  3715      STA  VALLO
2F03 13      3720      INX  D
2F04 13      3725      INX  D
2F05 1A      3730      LDAX D
2F06 329832  3735      STA  LAST
2F09 13      3740      INX  D
2F0A 1A      3745      LDAX D
2F0B 329932  3750      STA  LAST+1
2F0E CDB42F  3755      CALL CONVR
2F11 2AB232  3760      LHL  HOLDT
2F14 EB      3765      XCHG
2F15 21B432  3770      LXI  H,NUMBR
2F18 0E05    3775      MVI  C,5
2F1A 7E      3780 LSTN3: MOV  A,M
2F1B 12      3785      STAX D
2F1C 23      3790      INX  H
2F1D 13      3795      INX  D
2F1E 0D      3800      DCR  C
2F1F C21A2F  3805      JNZ  LSTN3
2F22 13      3810      INX  D
2F23 13      3815      INX  D
2F24 EB      3820      XCHG
2F25 22B232  3825      SHLD HOLDT
2F28 219332  3830      LXI  H,CHRCT
2F2B 3E07    3835      MVI  A,7
2F2D 86      3840      ADD  M
2F2E 329332  3845      STA  CHRCT
2F31 3A9232  3850      LDA  LINCT
2F34 3D      3855      DCR  A
2F35 CA4E2F  3860      JZ   LSTN4
2F38 329232  3865      STA  LINCT
2F3B 2A9832  3870      LHL  LAST
2F3E EB      3875      XCHG
2F3F 3ECC    3880      MVI  A,0CCH
2F41 BA      3885      CMP  D
2F42 C2F92E  3890      JNZ  LSTN2
2F45 BB      3895      CMP  E
2F46 C2F92E  3900      JNZ  LSTN2
2F49 3E81    3905      MVI  A,1
2F4B 329432  3910      STA  TAB

```

```

2F4E 3A9332 3915 LSTN4: LDA  CHRCT
2F50 1F 3922 MOV  C,A
2F50 214533 3925 LXI  H,PLINE
2F55 CD5E30 3930 CALL  PRINT
2F58 CD6830 3935 CALL  CRLF
2F5B 3A9432 3940 LDA  TAB
2F5E FE01 3945 CPI  I
2F60 C26A2F 3950 JNZ  LSTN6
2F63 2A9C32 3955 LSTN5: LHLD NEXT
2F66 22B032 3960 SHLD TOP
2F69 C9 3965 RET
2F6A 2A9832 3970 LSTN6: LHLD LAST
2F6D 3ECC 3975 MVI  A,0CCH
2F6F 8C 3980 CMP  H
2F70 C27A2F 3985 JNZ  LSTN7
2F73 8D 3990 CMP  I
2F74 C27A2F 3995 JNZ  LSTN7
2F77 C3632F 4000 JMP  LSTN5
2F7A CD2130 4005 LSTN7: CALL BLKLN
2F7D 2A9832 4010 LHLD LAST
2F80 EB 4015 XCHG
2F81 C3E52E 4020 JMP  LSTN1
4025 ;
4030 ; CONVERTS EACH NUMBER IN THE LINE NUMBER
4035 ; LISTS FROM HEX TO DECIMAL (ASCII). THIS IS
4040 ; DONE BY INSPECTING EACH BIT OF THE STORED
4045 ; LINE NUMBER BEGINNING WITH THE HIGH ORDER
4050 ; BIT. IF THE BIT IS ON, THE APPROPRIATE VALUE
4055 ; (5 DIGITS) FROM THE DATA CALLED 'BASE1' ARE
4060 ; ADDED DECIMALLY, ONE DIGIT AT A TIME, INTO
4065 ; AN ACCUMULATOR AREA CALLED 'NUMBER'.
4070 ;
2F84 0E05 4075 CONV1: MVI  C,5
2F86 AF 4080 XRA  A
2F87 21B432 4085 LXI  H,NUMBER
2F8A 77 4090 CONV1: MOV  M,A
2F8B 23 4095 INX  H
2F8C 8D 4100 DCR  C
2F8D C26A2F 4105 JNZ  CONV1
2F90 AF 4110 XRA  A
2F91 329432 4115 STA  TAB
2F94 210833 4120 LXI  H,BASE+79
2F97 EB 4125 XCHG
2F98 3AA432 4130 LCA  VALHI
2F9B 47 4135 CONV2: MOV  B,A
2F9C 0E08 4140 MVI  C,8
2F9E 78 4145 CONV3: MOV  A,B
2F9F E680 4150 ANI  80H
2FA1 C2AC2F 4155 JNZ  CONV4
2FA4 1B 4160 DCX  D
2FA5 1B 4165 DCX  D
2FA6 1B 4170 DCX  D
2FA7 1B 4175 DCX  D
2FA8 1B 4180 DCX  D
2FA9 C3DD2F 4185 JMP  CONV8
2FAC 215832 4190 CONV4: LXI  H,NUMBER+4
2FAF AF 4195 XRA  A
2FB0 329532 4200 STA  CARRY
2FB3 3E85 4205 MVI  A,5
2FB5 329632 4210 CONV5: STA  COUNT
2FB8 1A 4215 LDAX  D
2FB9 86 4220 ADD  M
2FBA 77 4225 MOV  M,A
2FBB 3A9532 4230 LDA  CARRY
2FBE 86 4235 ADD  M
2FBF FE8A 4240 CPI  8AH
2FC1 CAC2F 4245 JZ  CONV6
2FC4 D2CC2F 4250 JNC  CONV6
2FC7 77 4255 MOV  M,A
2FC8 AF 4260 XRA  A
2FC9 C3D12F 4265 JMP  CONV7
2FCC D60A 4270 CONV6: SUI  8AH
2FCE 77 4275 MOV  M,A
2FCF 3E01 4280 MVI  A,1
2FD1 329532 4285 CONV7: STA  CARRY
2FDA 2B 4290 DCX  H
2FDD 1B 4295 DCX  D
2FDE 3A9632 4300 LDA  COUNT
2FD9 3D 4305 DCR  A
2FDA C2B52F 4310 JNZ  CONV5
2FDD 8D 4315 CONV8: DCR  C
2FDE CAE72F 4320 JZ  CONV9
2FE1 78 4325 MOV  A,B
2FE2 87 4330 RLC
2FE3 47 4335 MOV  B,A
2FE4 C39E2F 4340 JMP  CONV3
2FE7 3A9432 4345 CONV9: LDA  TAB
2FEA FE01 4350 CPI  I
2FEC CAF2F 4355 JZ  CON10
2FEF 3E01 4360 MVI  A,1
2FF1 329432 4365 STA  TAB
2FF4 3AA532 4370 LDA  VALLO
2FF7 C39E2F 4375 JMP  CONV2
2FFA 8E85 4380 CON10: MVI  C,5
2FFC 21B432 4385 LXI  H,NUMBER
2FFF 7E 4390 CON11: MOV  A,H
3000 C630 4395 ADI  30H
3002 77 4400 MOV  M,A
3003 3A9432 4405 LDA  TAB
3006 FE01 4410 CPI  I
3008 C21B30 4415 JNZ  CON13
300B 3E30 4420 MVI  A,30H
300D BE 4425 CMP  H
300E C21730 4430 JNZ  CON12
3011 3E20 4435 MVI  A,20H
3013 77 4440 MOV  M,A
3014 C31B30 4445 JMP  CON13
3017 AF 4450 CON12: XRA  A
3018 329432 4455 STA  TAB
301B 23 4460 CON13: INX  H
301C 8D 4465 DCR  C
301D C27F2F 4470 JNZ  CON11
3020 C9 4475 RET

```

```

4480 ;
4485 ; FILLS THE PRINT LINE WITH SPACES (20H).
4490 ;
3021 0E48 4495 BLKLN: MVI  C,72
3023 214533 4500 LXI  H,PLINE
3026 3E20 4405 MVI  A,20H
3028 77 4510 BLKLN: MOV  M,A
3029 23 4515 INX  H
302A 8D 4520 DCR  C
302B C22830 4525 JNZ  BLKLN
302E C9 4530 RET
4535 ;
4540 ; THIS ROUTINE READS ONE 256 BYTE BLOCK
4545 ; OF DATA FROM THE DISK INTO THE AREA
4550 ; CALLED 'DATA'.
4555 ;
302F 3E01 4560 RDBLK: MVI  A,1
3031 0E01 4565 MVI  B,1
3033 219131 4570 LXI  H,DRIVE
3036 4E 4575 MOV  C,H
3037 119231 4580 LXI  D,DATA
303A 2A8933 4585 LHLD  DIR
303D 23 4590 INX  H
303E 228933 4595 SHLD  DIR
3041 2B 4600 CCK  H
3042 CD2220 4605 CALL  RDDSK
3045 D25630 4610 JNC  RDBLI
3048 0E0E 4615 MVI  C,14
304A 213331 4620 LXI  H,HDR10
304D CD3E30 4625 CALL  PRINT
3050 CD6830 4630 CALL  CRLF
3053 C32820 4635 JMP  EXIT
3056 AF 4640 RDBLI: XRA  A
3057 32A832 4645 STA  BLKPT
305A 119231 4650 LXI  D,DATA
305D C9 4655 RET
4660 ;
4665 ; PRINT STRING AT ADDRESS IN REG H/L FOR
4670 ; NUMBER OF CHARACTERS IN REG C.
4675 ;
305E 46 4680 PRINT: MOV  B,H
305F CD0D20 4685 CALL  COUT
3062 23 4690 INX  H
3063 8D 4695 DCR  C
3064 CD5E30 4700 JMP  PRINT
3067 C9 4705 RET
4710 ;
4715 ; INSERT CR AND LF
4720 ;
3068 0E0D 4725 CRLF: MVI  B,0DH
306A CD0D20 4730 CALL  COUT
306D 0E0A 4735 MVI  B,8AH
306F CD0D20 4740 CALL  COUT
3072 C9 4745 RET
4750 ;
4755 ; CHECK BLOCK ROUTINE
4760 ;
3073 13 4765 NXTCR: INX  D
3074 21A032 4770 LXI  H,BLKPT
3077 34 4775 INR  M
3078 CC2F30 4780 CZ  RDBLK
307B 62 4785 MOV  H,D
307C 6B 4790 MOV  L,E
307D 3E0D 4795 MVI  A,0DH
307F BE 4800 CMP  M
3080 C28630 4805 JNZ  NXTCI
3083 32A132 4810 STA  LNTAB
3086 C9 4815 NXTCI: RET
4820 ;
4825 ; HEADERS
4830 ;
3087 4E4F5254484835 HDR1: DB  'NORTHSTAR BASIC PROGRAM SUPPORT'
308A 4E414D45224840 HDR2: DB  'NAME OF PROGRAM: '
308F 4F4E2044524845 HDR3: DB  'ON DRIVE #: '
3093 4E4FE050524850 HDR4: DB  'NO PROGRAM WITH THAT NAME'
309C 46494C45204855 HDR5: DB  'FILE IS NOT TYPE 2'
30EE 5441424C454860 HDR6: DB  'TABLE FULL - PARTIAL LIST SUPPLIED'
3110 4E414D45204865 HDR7: DB  'NAME IS TOO LONG'
3120 494E56414C4870 HDR8: DB  'INVALID UNIT'
312C 4E4F28524F4875 HDR9: DB  'NO ROOM'
3133 415247554D4880 HDR10: DB  'ARGUMENT ERROR'
3141 53594D424E4885 HDR11: DB  'SYMBOLIC VARIABLES'
3153 535452494E4890 HDR12: DB  'STRING VARIABLES'
3163 41525241594895 HDR13: DB  'ARRAY VARIABLES'
3172 4C494E45204900 HDR14: DB  'LINE NUMBERS'
317E 4E554C4C204905 HDR15: DB  'NULL LIST'
3187 4910 PNAME: DS 10
3191 4915 DRIVE: DS 1
3192 4920 DATA: DS 256
3193 4925 LINCT: DS 1
3194 4930 CHRCT: DS 1
3195 4935 TAB: DS 1
3196 4940 CARRY: DS 1
3197 4945 COUNT: DS 1
3198 4950 MARK: DS 1
3199 4955 LAST: DS 2
3200 4960 PRSNT: DS 2
3201 4965 NEXT: DS 2
3202 4970 POINT: DS 2
3203 4975 BLKPT: DS 1
3204 4980 LNTAB: DS 1
3205 4985 LOLIN: DS 1
3206 4990 HILIN: DS 1
3207 4995 VALHI: DS 1
3208 5000 VALLO: DS 1
3209 5005 STTOP: DS 2
3210 5010 STTOP: DS 2
3211 5015 ARTOP: DS 2
3212 5020 NMTOP: DS 2
3213 5025 AVAIL: DS 2
3214 5030 TOP: DS 2
3215 5035 HOLDT: DS 2
3216 5040 NUMBR: DS 5

```

```

3289 8888888815845 BASE: DB 0.0.0.0.1.0.0.0.0.2.0.0.0.0.4.0.0.0.0
32CC 8888888815850 DB 8.0.0.0.1.6.0.0.0.3.2.0.0.0.0.6.4.0.0.1
32DF 8888888825855 DB 2.8.0.0.2.5.6.0.0.5.1.2.0.1.0.2.4.0.2
32F2 8888888845860 DB 0.4.0.0.4.0.9.6.0.0.1.9.2.1.0.6.3.0.4.3
3305 82870608 5065 DB 2.7.6.8
3309 5070 DIR: OS 8
3311 5075 STACK: DS 50
3343 5080 ADDR: DS 2
3345 5085 PLINE: DS 72
336D 5090 TABLE: DS 12288
636D 5095 END 2A80H

```



DH 2A00)33FF

> DH 2A00-33FFF?
> DH 2A00-33FF?

```

2A00 21 42 33 F9 0E 1F 21 87 30 CD 5E 30 CD 68 30 0E
2A10 11 21 A6 30 CD 5E 30 0E 0A 21 87 31 36 20 23 0D
2A20 C2 1C 2A 0E 09 21 87 31 CD 10 20 32 B2 32 FE 0D
2A30 CA 6F 2A FE 5F C2 54 2A 3E 09 B9 CA 28 2A 3A B2
2A40 32 2B 0C 47 CD 0D 20 06 20 CD 0D 20 06 5F CD 0D
2A50 20 C3 28 2A 77 47 CD 0D 20 23 0D C2 28 2A CD 68
2A60 30 0E 10 21 10 31 CD 5E 30 CD 68 30 C3 0F 2A 0E
2A70 0C 21 B7 30 CD 68 30 CD 5E 30 21 91 31 CD 10 20
2A80 47 CD 0D 2D FE 31 CA A4 2A FE 32 CA A4 2A FE 33
2A90 CA A4 2A CD 68 30 0E 0C 21 20 31 CD 5E 30 CD 68
2AA0 30 C3 6F 2A E6 0F 77 CD 10 20 47 CD 0D 20 FE 0D
2AB0 CD 93 2A 06 0A CD 0D 20 3A 91 31 21 87 31 37 3F
2AC0 CD 1C 20 D2 DA 2A 0E 19 21 C3 30 CD 5E 30 CD 68
2AD0 30 C3 0F 2A 06 00 0E 04 09 3E 02 EE CA ED 2A 0E
2AE0 12 21 DC 30 CD 5E 30 CD 68 30 C3 0F 2A 2B 2B
2AF0 2B 0E 08 11 09 33 7E 12 23 13 0D C2 F6 2A 26 00
2B00 2E 00 22 43 33 06 00 0E 0A 11 8F 33 2A 43 33 23
2B10 3E 0C BC CA 23 2B 22 43 33 62 6B 09 EB 73 23 72
2B20 C3 0C 2B 3E FF 23 77 26 BB 2E 8B 22 A6 32 22 A8
2B30 32 22 AA 32 2E 33 77 21 8F 33 22 AE 32 CD 2F 30
2B40 AF 32 97 32 3C EB BE CA BC 2D EB CD 73 32 1A 32
2B50 A2 32 CD 73 30 1A 32 CA 32 AF 32 A1 32 CD 73 30
2B60 62 6B 3E 20 EE CA B6 2B 3E 8F EE C2 73 2B 3E 01
2B70 32 97 32 3E 2E BE C2 90 2B 3A 97 32 FE 02 C2 88
2B80 2B AF 32 FE 02 C3 B6 2B 3E 02 32 97 32 C3 B6 2B
2B90 3A 97 32 97 30 C2 B6 2B 3E 9A EE C2 A4 2B CD C8
2BA0 2B C3 B6 2B 3E 40 BE D2 B6 2B 3E 5A BE DA B6 2B
2BB0 CD EA 2B C3 B9 2B CD 73 30 3E 0D 21 A1 32 BE C2
2BC0 6B 2B CD 73 30 C3 40 2B CD 73 30 1A 32 A5 32 CD
2BD0 73 30 1A 32 A4 32 AF 32 A1 32 2A AC 32 22 B0 32
2BE0 CD 7A 2C 2A B0 32 22 AA 32 C9 3E 20 32 A5 32 32
2BF0 A4 32 1A 32 A4 32 CD 73 30 3E 0D 21 A1 32 BE C2
2C00 08 2C CD 4A 2C C3 49 2C 62 6B 3E 2F BE 02 2C 2C
2C10 3E 39 BE DA 2C 2C 1A 32 A5 32 CD 73 30 3E 0D 21
2C20 A1 32 BE C2 2C 2C CD 4A 2C C3 49 2C 62 6B 3E 24
2C30 BE C2 3A 2C CD 5A 2C C3 49 2C 3E EB BE C2 46 2C
2C40 CD 6A 2C C3 49 2C CD 4A 2C C9 2A A6 32 22 B0 32
2C50 CD 7A 2C 2A B0 32 22 AA 32 C9 2A A6 32 22 B0 32
2C60 CD 7A 2C 2A B0 32 22 AA 32 C9 22 9C 32 EB 22 9E
2C70 CD 7A 2C 2A B0 32 22 AA 32 C9 22 9C 32 EB 22 9E
2C80 32 3E BB 32 98 32 32 99 32 2A AE 32 22 9A 32 2B
2C90 3A A4 32 77 2B 3A A5 32 77 23 23 3E BB 77 23 77
2CA0 23 23 23 7E 32 AE 32 3E CC 77 23 7E 32 AF 32 3E
2CB0 CC 77 2A 9C 32 3E BB BC C2 C9 2C BD C2 C9 2C 2A
2CC0 9A 32 22 B0 32 CD 7A 2D C9 2E 56 3A A4 32 BA CA
2CD0 32 2D D2 FB 2C 2A 9A 32 3A 9C 32 77 23 3A 9D 32
2CE0 77 2A 98 32 3E BB BC C2 EE 2C BD CA BF 2C 3A 9A
2CF0 32 77 23 3A 9B 32 77 CD 75 2D C9 3E BB 2A 9C 32
2D00 BC C2 18 2D 2A 98 32 3A 9A 32 77 23
2D10 3A 9B 32 77 CD 75 2D C9 2A 9C 32 22 98 32 5E 23
2D20 56 EB 22 9C 32 3E BB BC C2 C9 2C BD C2 C9 2C C3
2D30 08 2D 2B 56 3A A5 32 BE CA 41 2D D2 FB 2C C3 D5
2D40 2C 2A AE 32 2B 25 25 3A AF 32 77 2B 3A AE 32 77
2D50 2B 2B 2B 2E 2A AE 32 2B 2B 2B 2B 2E AE 32 EB 3A
2D60 AF 32 77 2B 3A AE 32 77 22 AE 32 2A 9C 32 22 9A
2D70 32 CD 75 2D C9 2A 9A 32 23 23 23 23 3E CC BE C2
2D80 B5 2D 23 BE C2 BA 2D 2B 3A AE 32 77 23 CA AF 32
2D90 77 2A AE 32 2B 25 3A A2 32 77 23 3A A3 32 77 23
2DA0 7E 32 AE 32 3E CC 77 23 7E 32 AF 32 3E CC 77 2A
2DB0 9E 32 EB C9 2B 5E 23 56 EB C3 7C 2D 0E 12 21 41
2DC0 31 CD 68 30 CD 5E 30 CD 68 30 2A A6 32 22 B0 32
2DD0 3E 01 32 97 32 CD 2F 2E CD 68 30 0E 10 21 53 31
2DE0 CD 5E 30 CD 68 30 2A 0E 32 22 B0 32 3E CC 32 97
2DF0 32 CD 2F 2E CD 68 30 0E 0F 21 63 31 CD 5E 30 CD
2E00 68 30 2A AA 32 22 B0 32 3E 03 32 97 32 CD 2F 2E
2E10 CD 68 30 0E 0C 21 72 31 CD 5E 30 CD 68 30 2A AC
2E20 32 22 B0 32 3E 04 32 97 32 CD 2F 2E C3 28 20 2A
2E30 B0 32 3E BB BC CD 2E 4B 2E BD C2 4B 2E 0E 09 21 7E
2E40 31 CD 68 30 CD 5E 30 CD 68 30 C9 CD 21 09 2A B0
2E50 32 5E 23 56 2B EB 22 9C 32 3A 97 32 FE 04 C2 8B
2E60 2E 1B 1A 32 A4 32 1B 1A 32 A5 32 CD 84 2F 21 45
2E70 33 EB 21 BA 32 2E 05 7E 12 23 13 0D C2 77 2E 2A
2E80 B0 32 EB 1B 1B CD DB 2E C3 C1 2E 21 45 33 1B 1A
2E90 77 23 1B 1A FE 20 CA 9B 2E 77 23 3A 97 32 FE 02
2EA0 C2 AC 2E 3E 24 77 CD 7B 2E C3 C1 2E FE 03 C2 5E
2EB0 2E 3E 28 77 23 77 27 CD DB 2E C3 C1 2E CD DB
2EC0 2E 2A 9C 32 3E BB BC C2 CF 2E BD C2 CF 2E C9 CD
2ED0 68 30 2A 9C 32 22 B0 32 C3 4B 2E 13 13 13 13

```

```

2EE0 13 13 13 13 13 AF 32 94 32 3E 08 32 92 32 3E 0C
2EF0 32 93 32 21 51 33 22 B2 32 1B 1A 32 A4 32 1B 1A
2F00 32 A5 32 13 13 1A 32 98 32 13 1A 32 99 32 CD 84
2F10 2F 2A B2 32 EB 21 B4 32 0E 05 7E 12 23 13 0D C2
2F20 1A 2F 13 13 EB 22 B2 32 21 93 32 3E 07 86 32 93
2F30 32 3A 92 32 3D CA 4E 2F 32 92 32 2A 98 32 EB 3E
2F40 CC BA C2 F9 2E BB C2 F9 2E 3E 01 32 94 32 3A 93
2F50 32 4F 21 45 33 CD 5E 30 CD 68 30 3A 94 32 FE 01
2F60 C2 6A 2F 2A 9C 32 22 B0 32 C9 2A 98 32 3E CC BC
2F70 C2 7A 2F BD C2 7A 2F C3 63 2F CD 21 30 2A 98 32
2F80 EB C3 E5 2E 0E 05 AF 21 B4 32 77 23 0D C2 8A 2F
2F90 AF 32 94 32 21 08 33 EB 3A A4 32 47 0E 0C 78 E6
2FA0 80 C2 AC 2F 1B 1B 1B 1E 1B C3 DD 2F 21 B8 32 AF
2FB0 32 95 32 3E 05 32 96 32 1A 86 77 32 95 32 86 FE
2FC0 0A CA CC 2F D2 CC 2F 77 AF C3 D1 2F D6 0A 77 3E
2FD0 01 32 95 32 2B 1B 3A 96 32 3D C2 B5 2F 0D CA E7
2FE0 2F 78 07 47 C3 9E 2F 3A 94 32 FE 01 CA FA 2F 3E
2FF0 01 32 94 32 3A A5 32 C3 9B 2F 0E 05 21 54 32 17
3000 30 60 77 3A 94 32 FE 01 C2 1B 30 3E 30 BE C2 7E
3010 30 3E 20 77 C3 1B 30 AF 32 94 32 23 0D C2 7F 2F
3020 C9 9E 48 21 45 33 3E 20 77 23 0D C2 2B 30 C9 3E
3030 01 86 01 21 91 31 4E 11 92 31 2A 09 33 23 22 09
3040 33 2B CD 22 20 D2 56 30 0E 0E 21 33 31 CD 5E 30
3050 CD 68 30 C3 28 20 AF 32 A0 32 11 92 31 C9 46 CD
3060 0D 20 23 0D C2 5E 30 C9 06 0D CD 0D 20 06 0A CD
3070 0D 20 C9 13 21 A0 32 C4 CC 2F 30 62 6B 3E 0D BE
3080 C2 86 30 32 A1 32 C9 4E 4F 52 54 48 53 54 41 52
3090 20 42 41 53 49 43 20 50 52 4F 47 52 41 4D 20 53
30A0 55 50 50 4F 52 54 4E 41 4D 45 20 4F 46 20 50 52
30B0 4F 47 52 41 4D 3A 20 4F 4E 20 44 52 49 56 45 20
30C0 23 3A 20 4E 4F 20 50 52 4F 47 52 41 4D 20 57 49
30D0 54 48 20 54 4E 41 54 20 4E 41 4D 45 46 49 4C 45
30E0 20 49 53 20 4E 4F 54 20 54 59 50 45 20 32 54 41
30F0 42 4C 45 20 46 55 4C 4C 20 2D 20 50 41 52 54 49
3100 41 4C 20 4C 49 53 54 20 53 55 50 50 4C 49 45 44
3110 4E 41 4D 45 20 49 53 20 54 4F 4F 20 4C 4F 4E 47
3120 49 4E 56 41 4C 49 44 20 55 4E 49 54 4E 4F 20 52
3130 4F 4F 4D 41 52 47 55 4D 45 4E 54 20 45 52 52 47
3140 52 53 49 4D 42 4F 4C 49 43 20 56 41 52 49 41 42
3150 4C 45 53 53 54 52 49 4E 47 20 56 41 52 49 41 42
3160 4C 45 53 41 52 52 41 59 20 56 41 52 49 41 42 4C
3170 45 53 4C 49 4E 45 20 4E 55 4D 42 45 52 53 4E 55
3180 4C 4C 20 4C 49 53 54 54 41 42 4C 45 2B 32 0D 0A
3190 31 37 32 30 20 53 4C 49 4E 4B 3A 20 4C 48 4C 44
31A0 20 20 41 44 44 52 0D 0A 31 37 33 30 20 20 20 33
31B0 20 20 20 20 49 4E 58 20 20 20 48 0D 0A 31 37 33
31C0 20 20 20 20 20 20 20 20 20 20 4D 56 49 20 20 20 41
31D0 2C 30 43 48 0D 0A 31 37 33 34 20 20 20 20 20 20
31E0 20 20 43 4D 50 20 20 20 48 0D 0A 31 37 33 36 20
31F0 20 20 20 20 20 20 20 20 4A 5A 20 20 20 20 53 4A 4F
3200 50 53 0D 0A 31 37 33 37 20 20 20 20 20 20 20 20 38
3210 53 48 4C 44 20 20 41 44 44 52 0D 0A 31 37 33 38
3220 20 20 20 20 20 20 20 20 4D 4F 56 20 20 20 20 48 2C
3230 44 0D 0A 31 37 34 30 20 20 20 20 20 20 20 20 4D
3240 4F 56 20 20 20 4C 20 45 0D 0A 31 37 35 30 20 20
3250 20 20 20 20 20 20 20 44 41 44 20 20 20 42 0D 0A 31
3260 37 36 30 20 20 20 20 20 20 20 20 20 58 43 48 47 0D
3270 0A 31 37 36 32 20 20 20 20 20 20 20 20 4D 4F 56
3280 20 20 20 4D 2C 45 0D 0A 31 37 36 34 20 20 20 20
3290 20 20 20 49 4E 58 20 20 20 4D 4F 56 20 20 20 4D
32A0 36 20 20 20 20 20 20 20 20 20 20 4F 56 20 20 4D
32B0 2C 44 0D 0A 31 37 36 38 20 00 00 00 00 01 00 00
32C0 00 00 02 00 00 00 00 00 00 00 00 00 00 00 00 00
32D0 01 06 00 00 00 00 03 02 00 00 00 06 04 00 00 01 02
32E0 08 02 00 02 05 06 00 00 05 01 02 00 01 00 02 04
32F0 00 02 00 04 08 00 04 00 00 00 09 06 00 08 01 09 02 01
3300 06 03 08 04 03 02 07 06 08 4F 56 20 20 20 4D 2C
3310 41 0D 0A 31 37 39 30 20 20 20 20 20 20 20 20 4D CD
3320 56 49 20 20 20 48 2C 30 20 42 42 48 0D 0A 31 38 30
3330 30 20 20 20 20 20 20 20 20 4D 56 49 20 20 20 4C
3340 2C 30 42 42 48 0D 0A 31 38 31 30 20 20 20 20 20
3350 20 20 20 53 48 4C 44 20 20 53 59 54 4F 50 0D 0A
3360 31 38 32 30 20 20 20 20 20 20 20 20 53 48 4C 44
3370 20 20 53 54 54 4F 50 0D 0A 31 38 33 30 20 20 20
3380 20 20 20 20 20 20 53 48 4C 44 20 20 41 52 54 4F 58
3390 0D 0A 31 38 34 30 20 20 20 20 20 20 20 20 53 48
33A0 4C 44 20 20 4E 4D 54 4F 50 0D 0A 31 38 35 30 20
33B0 20 20 20 20 20 20 20 20 4C 58 49 20 20 20 48 2C 54
33C0 41 42 4C 45 2B 32 0D 0A 31 38 36 30 20 20 20 20
33D0 20 20 20 20 53 48 4C 44 20 20 41 56 41 49 4C 0D
33E0 0A 31 39 30 30 20 20 20 20 20 20 20 43 41 4C
33F0 4C 20 20 52 44 42 4C 4B 0D 0A 31 39 31 38 20 3B

```

SYMBOLIC VARIABLES									
A	310	340	370	560	705				
B	330	340	360	560	705				
C	350	360	370	560	705				
D	480	480	530	532	560				
E	480	480	480	480	480	530	534	560	
F	480	480	480	532	534	560			
I	285	286	565	580	600	630			
J	286	286	570	580	600	620			
P	470	520	590	590	610	610	640	650	
	660	680							
T	400	410	690	750					
X	286	430	440	445	480	480	705	710	
STRING VARIABLES									
A3	50	80	820	830					
ARRAY VARIABLES									
Z ()	305	560	560	560	560	560	560	580	
	580								
LINE NUMBERS									
285	80								
290	830								
330	340								
350	360	370							
410	460	550							
450	440								
470	445								
540	530	532	534						
560	538								
620	580	600							
680	650								
690	670								
750	520	640							
820	740								

CLUB & CLASSROOM DISCOUNTS.
PEOPLE'S COMPUTER COMPANY PUBLICATIONS
Recreational Computing
Dr. Dobb's Journal

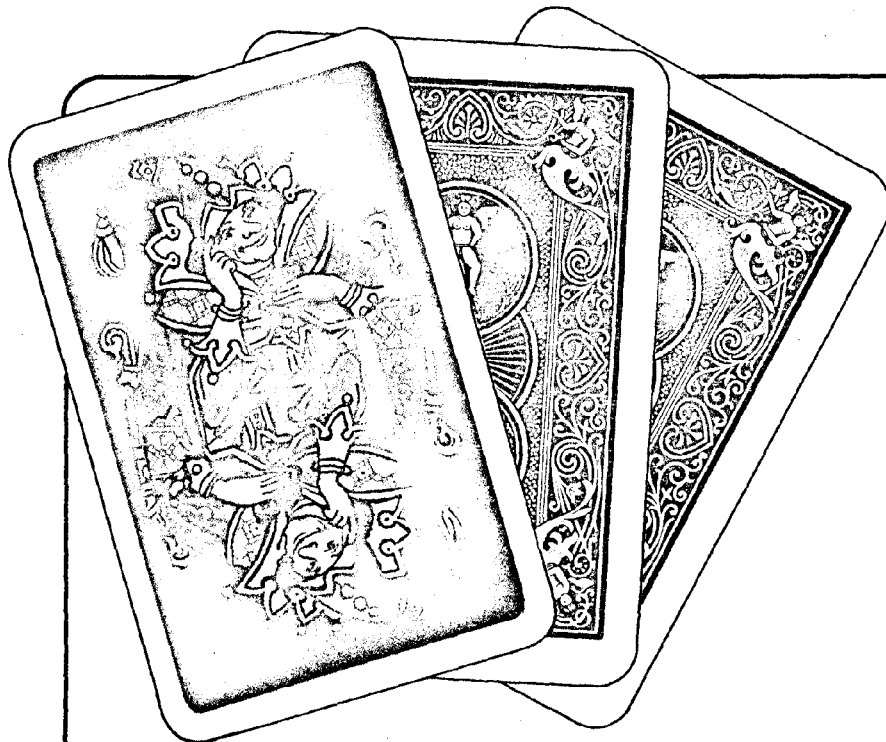
Clubs, users groups, schools and any others interested may take advantage of discounts for quantity orders of each of our magazines. See terms below.
 All orders will be shipped via UPS—faster than the post office!

DISCOUNT SCHEDULE
 (one year)

QUANTITY	DISCOUNT	RC	DDJ
Regular Subscription Rate/Year	none	\$ 10	\$ 15
5-10 copies	10%	9	13.50
11-24 copies	15%	8.50	12
25-49 copies	20%	8	12
50-74 copies	25%	7.50	11.25
75 + copies	30%	6.50	9.00

TERMS

Good in the U.S. only.
 Quantity orders must be made up of one title only—no mixing among titles.
 All copies must be shipped to same name and street address (no P.O. box).
 Payment must accompany order—check or money order only.
 Minimum one-year subscription.



It's not whether
 you win or lose,
 but how you
 play the game.

**Recreational
 COMPUTING**

Box E, Menlo Park, CA 94025

Published bi-monthly • \$10 for 1 year • See insert card inside this issue, or send us your name, address and zip along with your check.